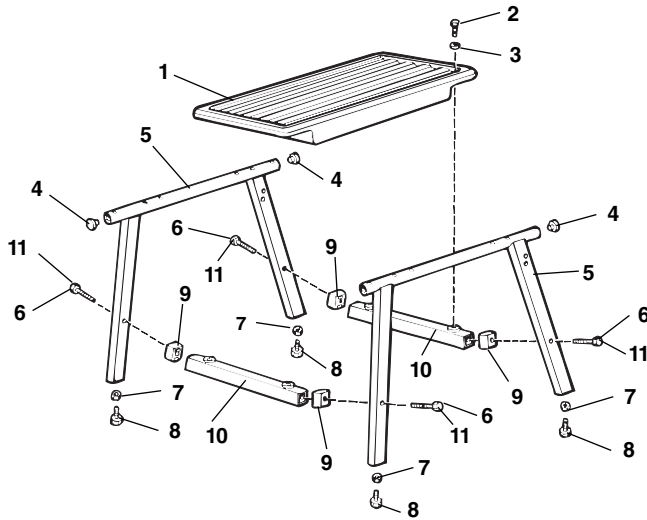


No. 100A Leg and Tray Stand

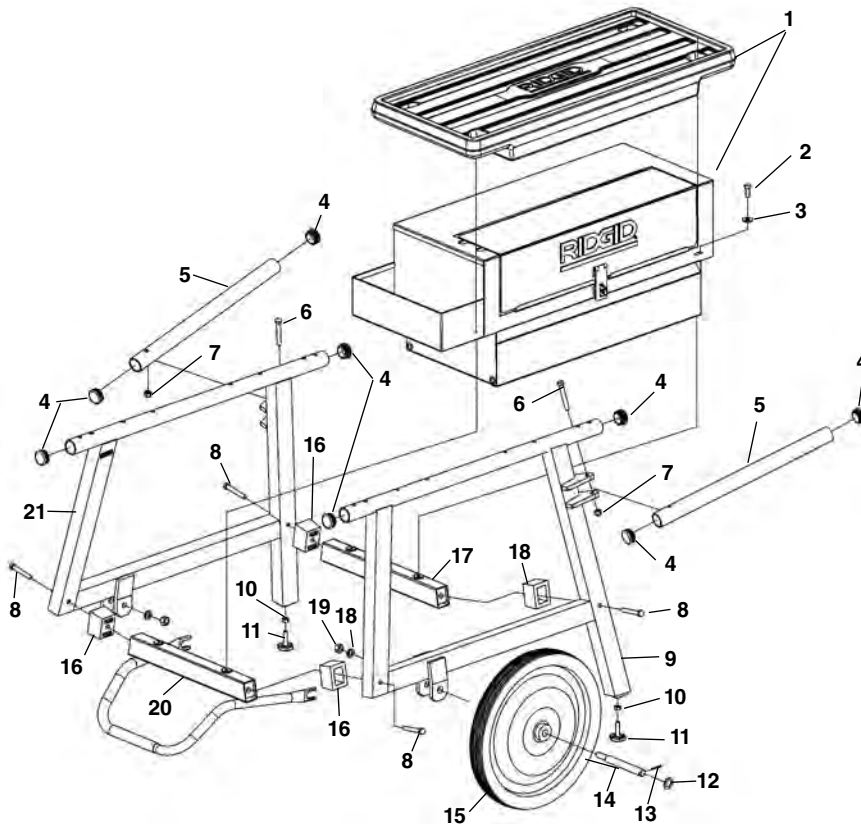


**NOTE: Order parts by Catalog Number only.
DO NOT order by Reference Number.**

Ref. No.	Catalog No.	Description
—	92457	Leg Stand Assembly
1	56872	Tray
2	80030	Hex Bolt $\frac{3}{8}$ " - 16 x 1" (4)
3	44230	Flat Washer $\frac{3}{8}$ " (4)
4	58037	End Cap (4)
5	58022	Leg (2)
6	58052	Hex Bolt $\frac{3}{8}$ " - 16 x 2 $\frac{1}{2}$ " (4)
7	44225	Hex Nut $\frac{3}{8}$ " - 16 (4)
8	58027	Leveling Pad (4)
9	58042	Spacer (4) - (1224 Machine Only)
10	58032	Cross Member (2)
11	58047	Hex Bolt $\frac{3}{8}$ " - 16 x 4" (4) (1224 & 535 Auto Machine Only)

NOTE: $\frac{3}{8}$ " - 16 x 4" Bolts and spacers used when mounting 1224 & 535 Auto machines.

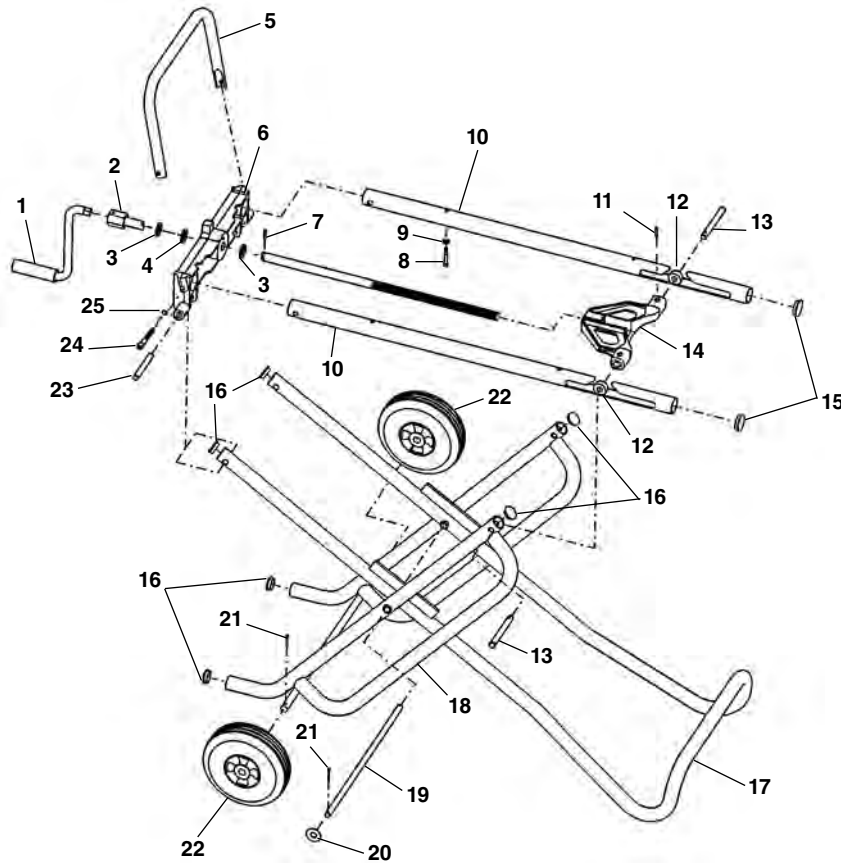
No. 150A/200A Wheel and Tray Stands



Ref. No.	Catalog No.	Description
—	92462	150A Wheel and Tray Assembly
—	92467	200A Wheel and Cabinet Assembly
1	56872	Tray
	22563	Cabinet
2	80030	Hex Bolt $\frac{3}{8}$ " - 16 x 1" (4)
3	44230	Flat Washer (4)
4	58037	End Cap (6)
5	58067	Handle (2) includes Ref. No. 6
	34843	Handle - Type 2 (2)
6	46675	Hex Bolt $\frac{3}{8}$ " - 16 x 2 $\frac{3}{4}$ " (2)
7	79985	Locknut $\frac{3}{8}$ " - 16 (2)
8	58052	Hex Bolt $\frac{3}{8}$ " - 16 x 2 $\frac{1}{2}$ " (4)
	58047	Hex Bolt $\frac{3}{8}$ " - 16 x 4" (4) (1224 & 535 Automatic Machine Only)
9	26788	Front Leg
10	44225	Hex Nut $\frac{3}{8}$ " - 16 (4)
11	58027	Leveling Pad
12	47180	Washer (2)
13	47030	Cotter Pin (2)
14	58072	Axle (2)
15	27442	Wheel (2)
16	58042	Spacer (4) (1224 & 535 Automatic Machines Only)
17	58032	Front Cross Member
18	84150	Lock Washer $\frac{1}{2}$ " (2)
19	44745	Locknut $\frac{1}{2}$ " (2)
20	26798	Rear Cross Member w/Stand Stop Assembly
21	26793	Rear Leg

NOTE: $\frac{3}{8}$ " - 16 x 4" bolts and spacers used when mounting 1224 & 535 Auto machines.

1406 Folding Wheel Stand



**NOTE: Order parts by Catalog Number only.
DO NOT order by Reference Number.**

Ref. No.	Catalog No.	Description
—	20105	1406 Folding Wheel Stand
1	51777	Crank Handle
2	51782	Screw Shaft
3	54312	Flat Washer (2)
4	36347	Nylon Bearing
5	36352	Rear Handle
6	45337	Brace
7	54300	Roll Pin 1/4" x 1 1/2"
8	46775	Screw 1/4" - 20 x 1 3/4" (4)
9	26947	Flat Washer 1/4" (4)
10	36367	Mounting Rail (2)
11	83325	Roll Pin 3/16" x 1 3/8" (2)
12	36377	Roller (2)
13	36382	Yoke Pin (2)
14	51787	Traverse Yoke
15	36312	Mounting Rail Cap (2)
16	36417	Pivot Assembly Cap (4)
17	51792	Leg Handle
18	51797	Pivot Assembly
19	36412	Pivot Shaft
20	83420	Flat Washer 1/2" (2)
21	47030	Cotter Pin 1/8" x 1" (4)
22	93325	Wheel (2)
23	45342	Groove Pin (2)
24	80045	Hex Bolt 3/8" - 16 x 3 1/4" (2)
25	41582	Washer-Int. Tooth (2)
26	35882	1460 Oil Pan Cover
27	36447	Tubing
28	36442	Elbow Fitting

